

Aspen Restoration on the Tahoe National Forest



Sierraville Ranger District

USDA Forest Service

Objectives

- Give a quick overview of our aspen restoration program on Sierraville Ranger District and the Tahoe N.F.
- Discuss some of the internal and external Challenges as well as our learning curve
- Display what we have done, and what we are planning for the future

Disappearing Aspen on the Landscape







SIERRAVILLE RD ASPEN RESTORATION PROJECTS

Project	Acres	DBH Limit	NEPA	Year	Completed	Notes
Rice	7	12"	CE	96-97	Yes	Riparian Restoration/FH
Anderson	5	8"	CE	96-99	?	Christmas tree removal SUP
Trosi	4	12"	CE	98-99	Yes & No	Hand Work / Billabong TS
Moscove Meadow	2.5	none	CE	98	Yes & No	Hand Work, Slash Fence/ Castle TS
Long Valley	2	none	CE	98	Yes & No	Hand Work/ OX
Anderson 2	2	none/30"	CE	99	Yes	1st TS, cut 20 trees
Moscove Meadow 2	2	10"	CE	2000	Yes & No	Hand Work/ Castle TS
Scraps	10	30"	EA	2001	No	Horse Thinning, Defaulted/ called thinning
Pass Creek	3	12"	CE	2001	Yes & No	Hand Work & chipping/ Castle TS
12 Road South	1.5	12"	CE	2002	Yes	Hand Work & Girdling
12 Road North	2.5	12"	CE	2002	Yes	Hand Work & Girdling
Borda	6	none	EA	2003	Yes	TS, Carmen & Calpine (68061, 685038a)
Phoenix	225	40"	EIS	2007	Partial	Timber Sale
Billabong AR	93	30"	EA	2007	Yes	TS Rock Creek & Trosi
Jumbuck AR	148	30"	EA	2007	Yes	TS's (Jones valley, etc.
Brumby	3	none	EA	2008	No	Timber Sale/Antelope
Kangaroo	7	30"	EA	2008	Yes	TS/Service Contract (cottonwood)
Dinkum	7	30"	EA	2008	Yes	TS Mechanical
Dingo AR	179	none/Mod	EA	2009	No	Timber Sale
Pass Creek 2 AR	25	none	EA	2009	No	Castle TS
Outback AR	479	none/Mod	EA	2009	Partial	Independence area +++
Saddle	2	none	EA	2010	No	Not under contract
Transition	26	none	EA	2012	Partial	hand and mechanical thinning
OX	67	30"	EA	2014	Planning	Modified retention standards for VQOs
TOTAL	1308.5					

Summary of Sierraville RDs Aspen Restoration 2014

Decision Years	Acres Planned	Acres Treated	Hand Removal	Mechanical Removal	Notes
1996-2002	41.5	41.5	41.5	0	Hand Removal only
2003	6	6	0	6	1 st Mechanical
2007-2009	1166	755	0	1166	All Mechanical
2010-2014	95	0	50	45	Mixed
Total	1308.5	802.5	91.5	1217	



TRUCKEE RANGER DISTRICT ASPEN RESTORATION PROJECTS

Project	Acres	DBH Limit	NEPA	Year	Completed	Notes
Pole Creek	3	12"	CE	1996	Yes	Hand Work
Jackass	20	16"	CE	1999	Yes	Hand Work
Bull Pasture	3	24"	CE	2001	Yes	Aspen/Fen Restoration
Hoke Creek	5	24"	CE	2001	Yes	Mechanical
Trimble	10	None	CE	2011	Yes	Small Pockets of discontinuous aspen
Mix	2.27	None	CE	2011	Yes	Mechanical/not one continuous unit
Dry creek	21.8	30"	EA	2013	Planning	11.8 Mech/6.4 hand/3.6 underburn only
Sagehen	6	30"	EA	2013	No	Hand thinning
Big Jack	Est. 50	TBD	?	?	Planning	In planning/future project
Hoke Valley	Est. 50	TBD	?	?	Planning	In planning/future project
TOTAL	171					

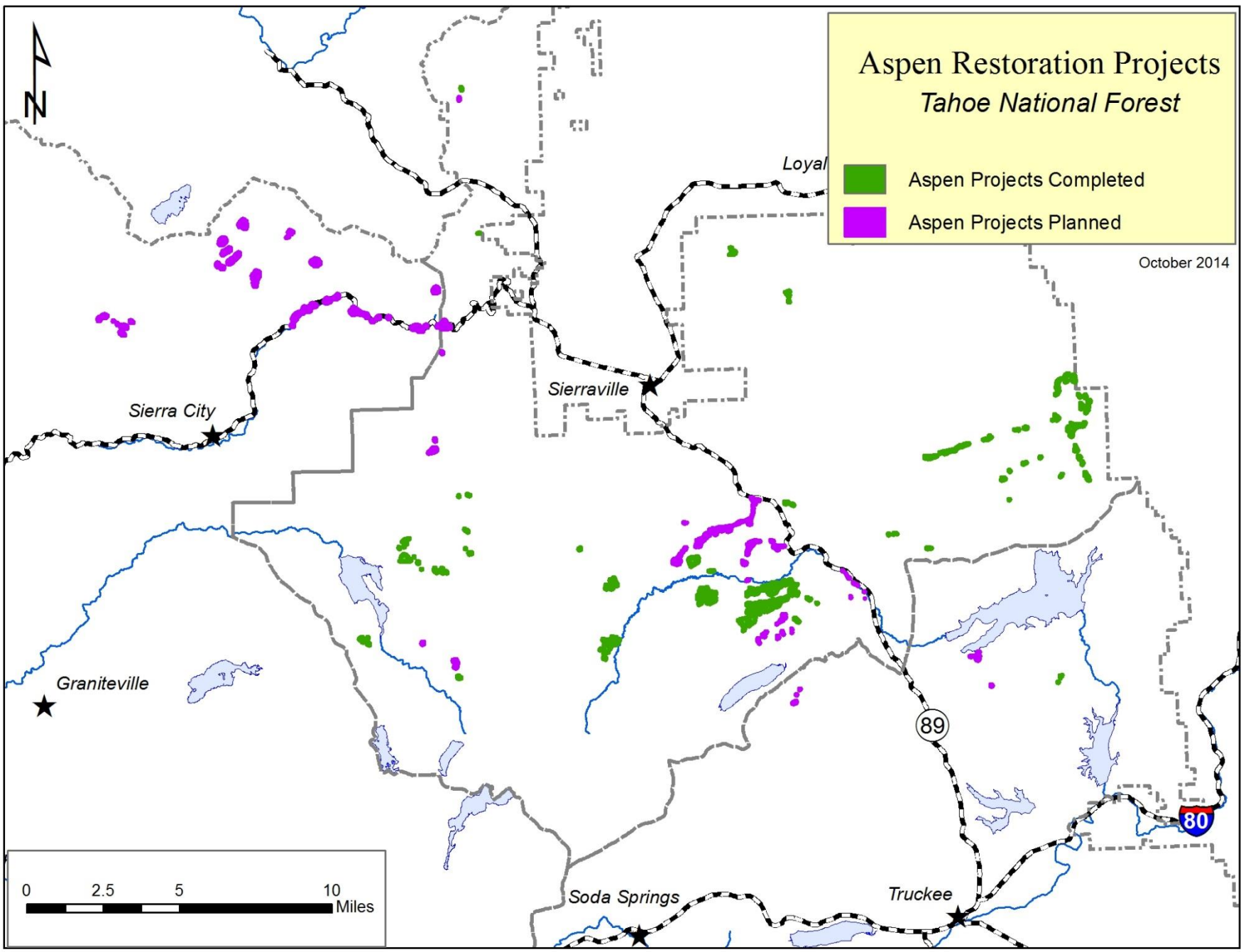
YUBA RIVER RANGER DISTRICT ASPEN RESTORATION PROJECTS

Project	Acres	DBH Limit	NEPA	Year	Completed	Notes
Lonie Meadows	15	None	CE	2011	No	Hand work/ girdling larger trees
Gold	50	None/L.T.	EA	2012	No	Not sold, Legacy tree definition/50 year maintenance
Yuba	Est. 500	None/L.T.	?	?	Planning	In Planning/ same guidelines as Gold EA
TOTAL	565					

Aspen Restoration Projects *Tahoe National Forest*

-  Aspen Projects Completed
-  Aspen Projects Planned

October 2014



0 2.5 5 10 Miles









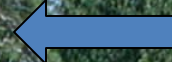
Carman Aspen Restoration 2004



Carman Post-harvest Fall 2004



Carman Spring 2005



Carman Spring 2005









Aspen Restoration Projects

Tahoe National Forest

 Outback Aspen Restoration

October 2014

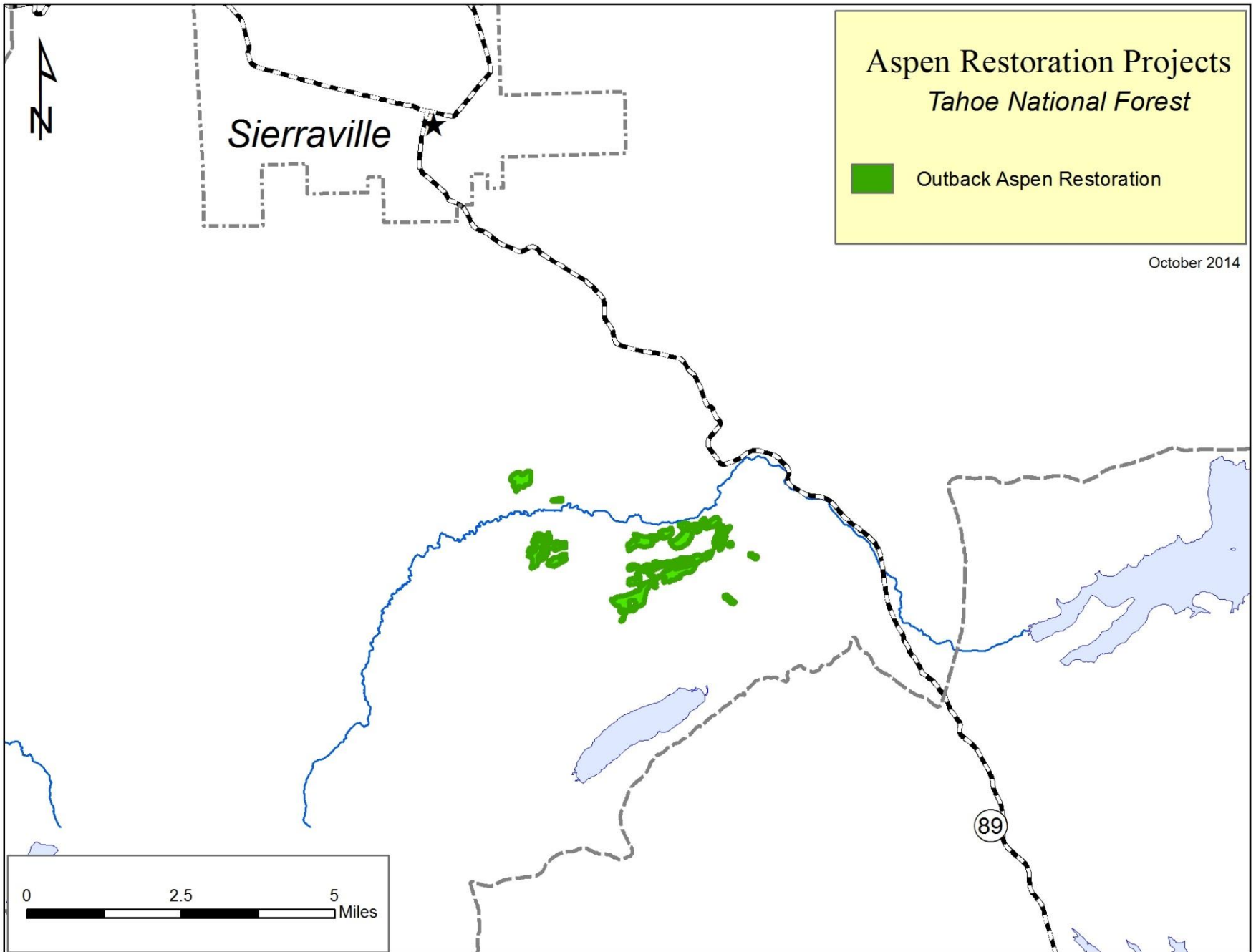


Sierraville



0 2.5 5 Miles

89



















Challenges SVRD has Encountered with Aspen Restoration

- Public groups lack full understanding of aspen ecology and the tools we have to restore aspen communities
- Lack of support for active management internally and externally
- Limited tools to do the job (economics vs 100% completion)
- Timelines and project tracking and monitoring

Trella TS – Phoenix EA



Carman Stand Not Treated



Concerns

- Disturbance, Mechanized equipment in riparian zones
- Aesthetics
- Intensity of restoration
- Potential short term risk of sediment movement
- Soil compaction
- Successful aspen restoration requires the removal of mid to large size conifers

QUESTIONS ?