



Sagehen Experimental Forest

USDA FOREST SERVICE

Pacific Southwest Research Station

SCALING UP COLLABORATIVE APPROACHES TO FOREST PROJECT DESIGN AND CREATIVE FUNDING VEHICLES FOR IMPLEMENTATION USING LESSONS LEARNED FROM THE SAGEHEN FOREST PROJECT ON THE TAHOE NATIONAL FOREST



Celebrating 60+ years! 1951 – 2016

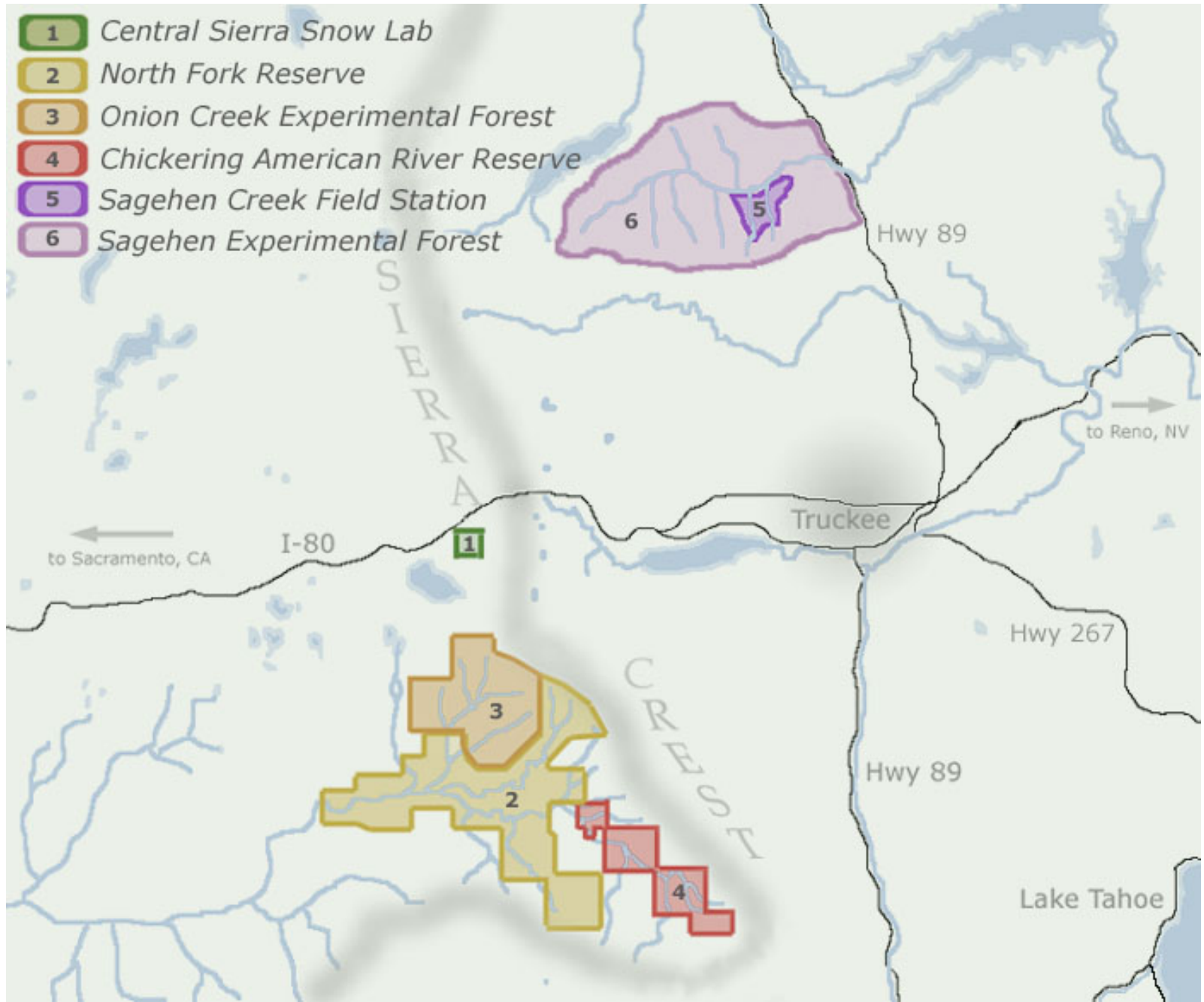


Office of the
Vice Chancellor for
Research



Central Sierra Field Research Stations

- 1 Central Sierra Snow Lab
- 2 North Fork Reserve
- 3 Onion Creek Experimental Forest
- 4 Chickering American River Reserve
- 5 Sagehen Creek Field Station
- 6 Sagehen Experimental Forest





Stampede Reservoir

Prosser Creek

Highway 89

Watershed Boundary

Sagehen Watershed

Sagehen Road

Sagehen Creek

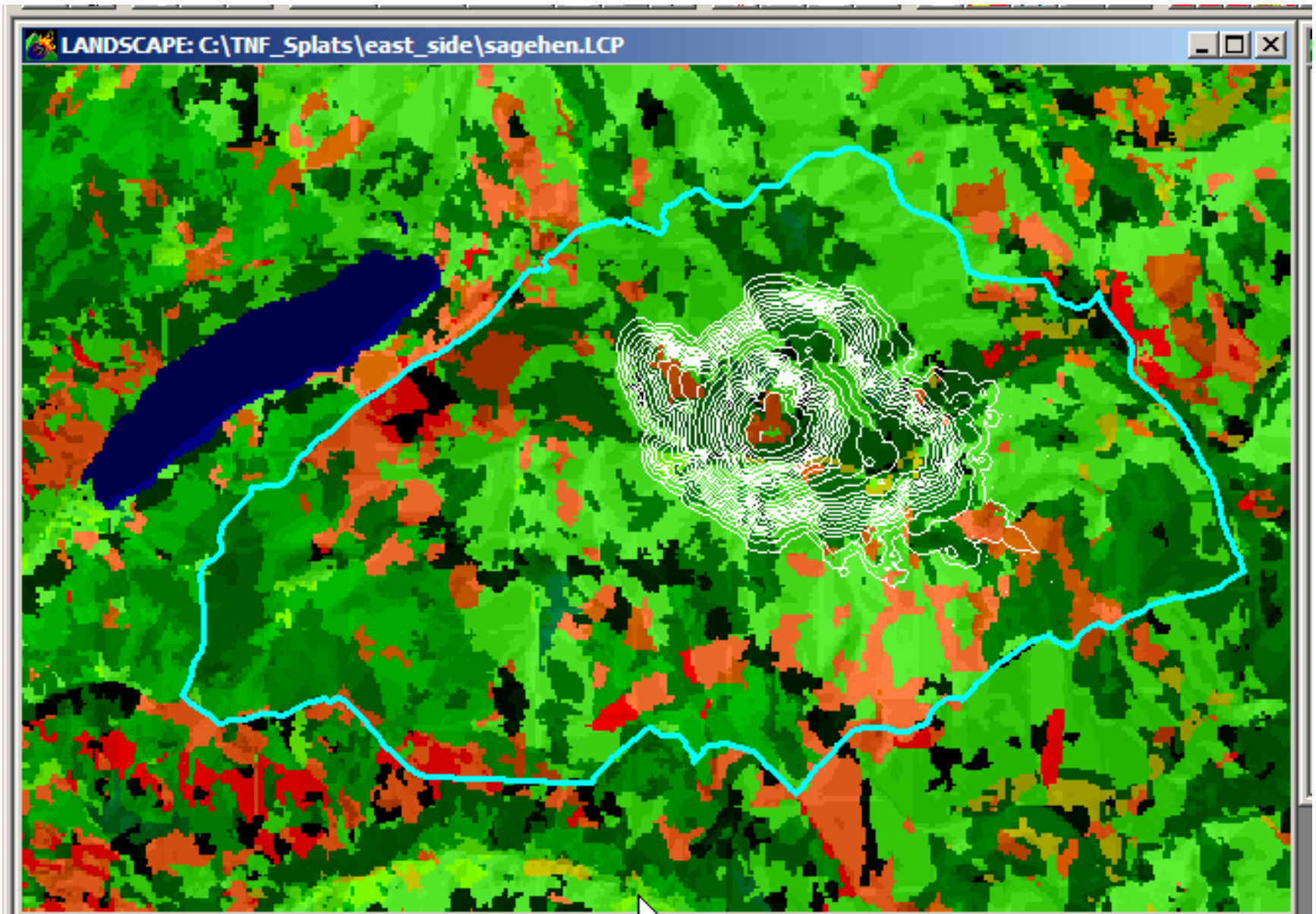
Independence Lake

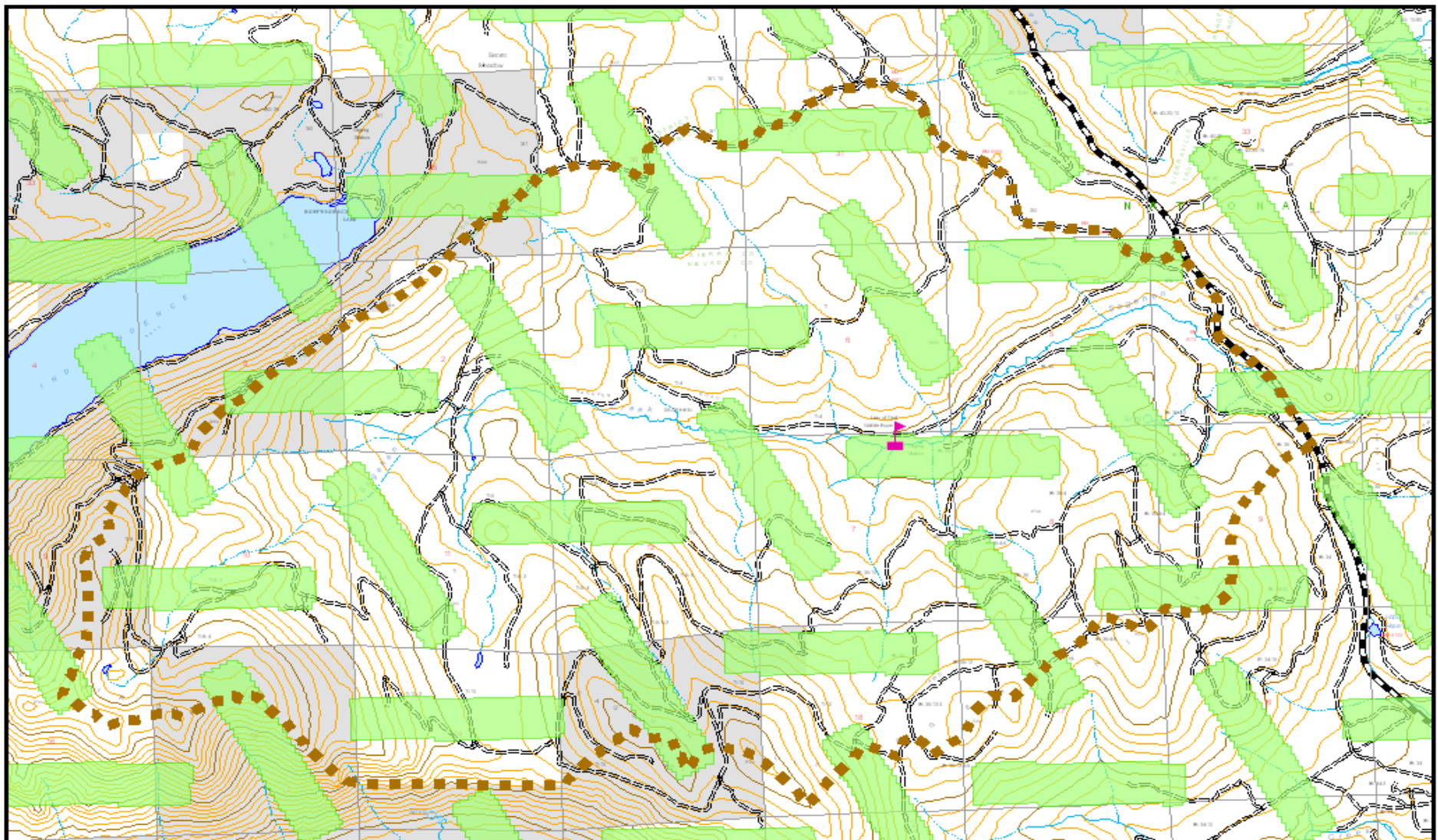
Carpenter Ridge

Existing Condition



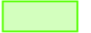
Campground fire model – no SPLATs, 1.5 day burn






Sagehen Project



 Finney Splat

Theoretical "Finney" Splats

 Project Boundary

 Non NFS Land



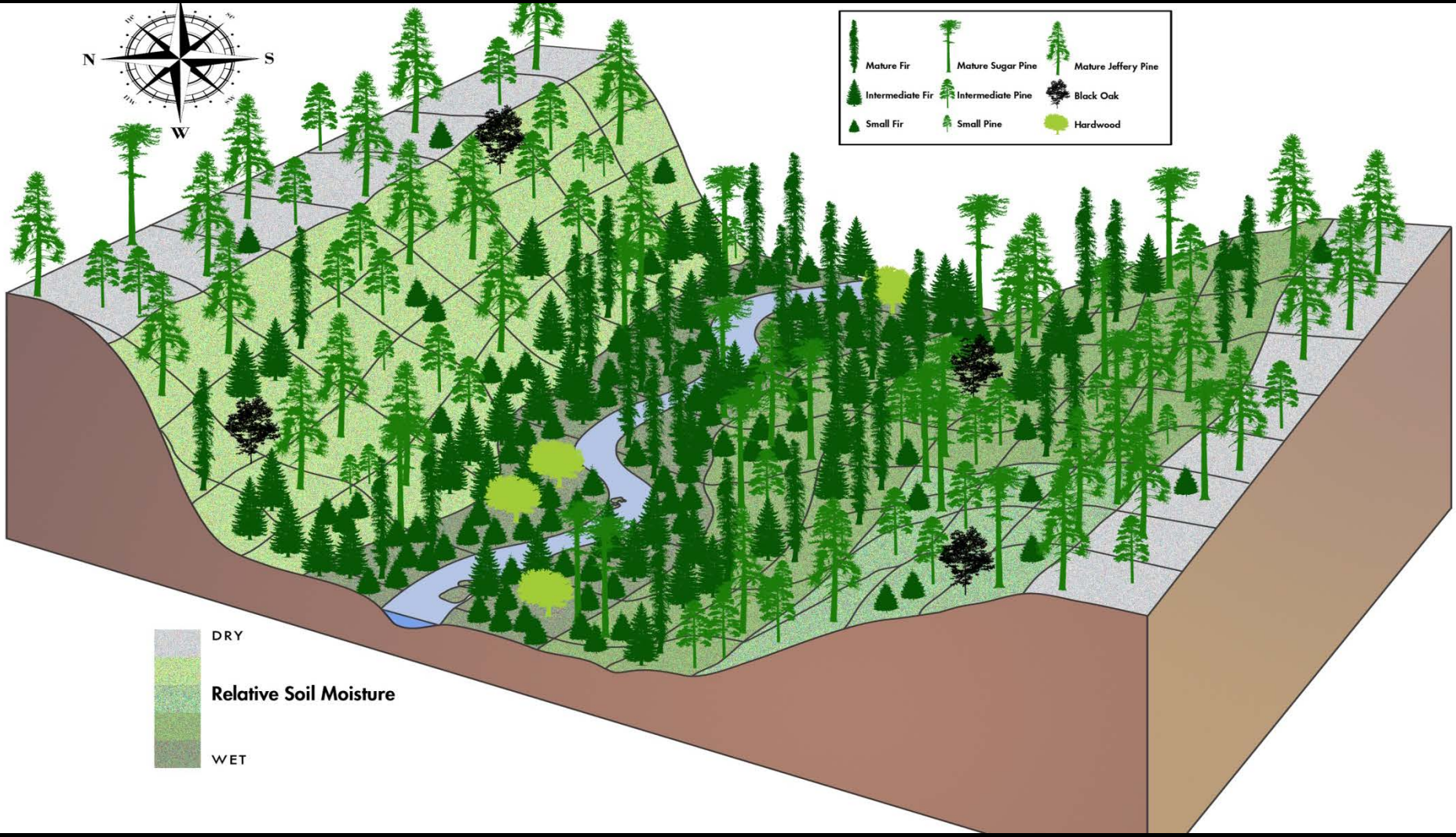
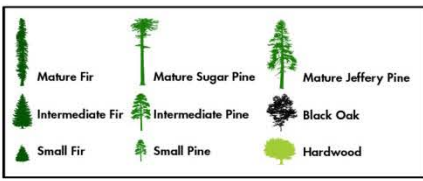
 Sagehen Field Station

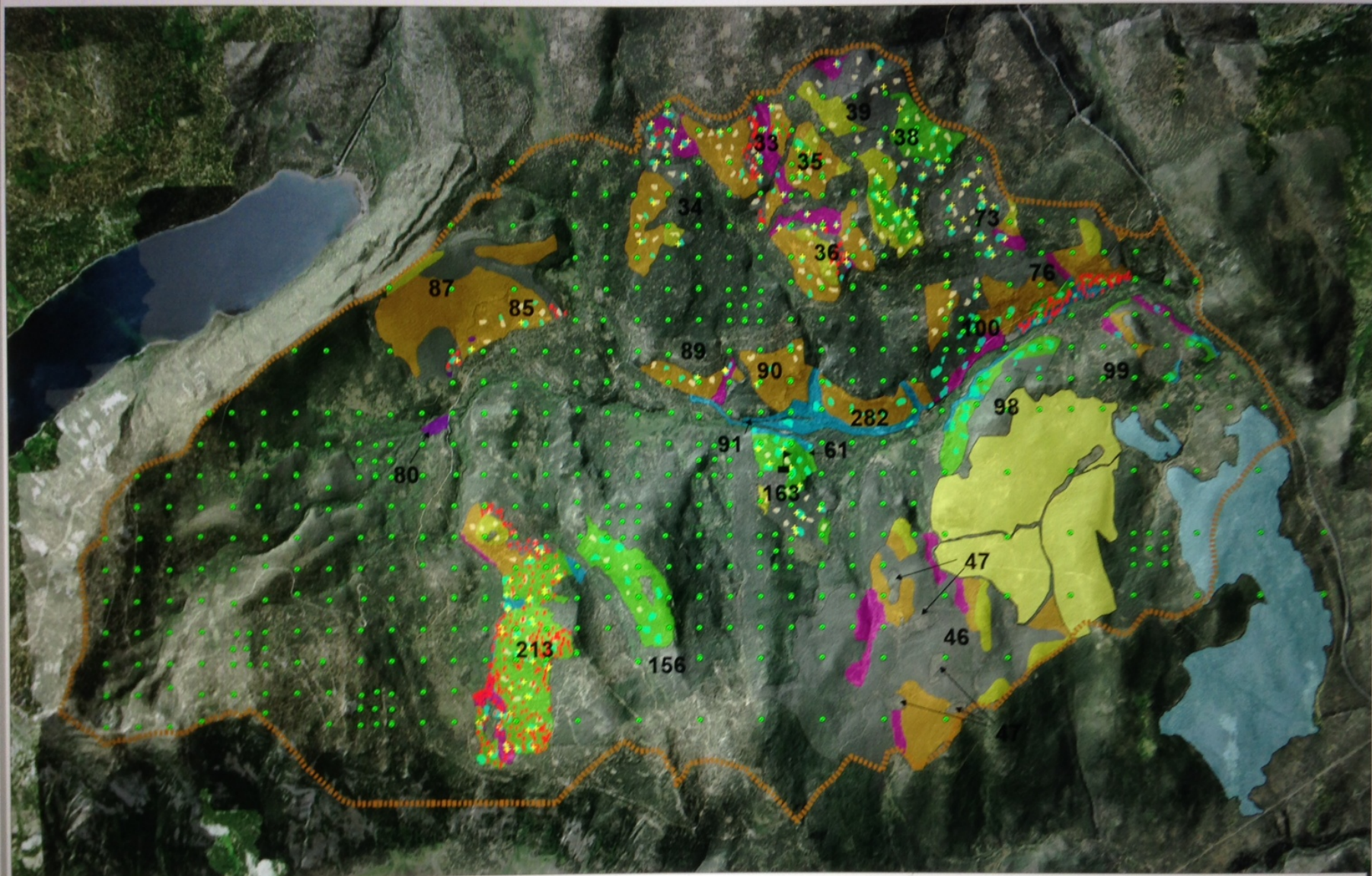
Collaborators: Sagehen Forest Project

UC Berkeley – Sagehen Creek Field Station
US Forest Service – Truckee Ranger District
US Forest Service – Pacific Southwest Research
Truckee River Watershed Council (TRWC)
Sierra Forest Legacy
Sierra Pacific Industries (SPI)
US Fish and Wildlife Service
USGS
CA Lahontan Regional Water Quality Control Bd
CA Department of Fish and Wildlife
CA Sierra Nevada Conservancy
CA Lake Tahoe Conservancy
Town of Truckee

Nevada County Board of Supervisors
Sierra County Wildlife Commission
UC Berkeley – College of Natural Resource
US Forest Service – Tahoe National Forest
US Forest Service – Region 5
US Forest Service – Washington Office
Nevada County Fire Safe Council
Cal Fire
Truckee Fire Department
Truckee Airport Board
Concerned Private Citizens
The Nature Conservancy (TNC)

<http://sagehenforest.blogspot.com>

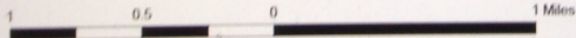




Sagehen Project



- Emphasis Area 1 - north facing w/ high canopy cover
- Emphasis Area 2 - drainage bottom w/ lodgepole overstory
- Emphasis Area 4 - drainage bottom
- Emphasis Area 5 - north facing
- Emphasis Area 6 - south facing
- Emphasis Area 7 - ridge top
- Emphasis Area 8 - aspen



- UCB Plot Location
- Mastication Only Completed 2013 (Billymass Contract)
- Thinning/Mastication Start 9/15/14 (Billymass Contract)

- Project Boundary
- Sagehen Field Station
- 38 Unit Boundary and Unit #
- + Short Snag Creation
- ⚡ Partial Tree Girdle
- Dense Cover Area
- Early Seral Opening





Fire plays an important role in this ecosystem

A few notable quotes from collaborators

- “With what we are trying to do here habitat wise, with the improvement of habitat for a wide variety of species, I cannot see how we can let this bird get in the way of this project moving forward.”
- “Through this process we have proven that Land Managers and Scientists can work together.”
- “I can’t say that I got what I originally wanted from this project. I think it is safe to say that I got more.”
- “At some point we all needed to agree that it would be okay if we failed as we were giving this our best shot. I don’t think we did; however, only time will tell.”
- “We have also proven that Land Managers and the Public can work together.”

- 3 letters of support
 - Sierra Pacific Industries
 - Sierra Forest Legacy
 - University of California – Berkeley
- No litigation
- Funding from both the Fed and CA
 - USFS – Fed
 - National Forest Foundation \$700,000
 - Saw log units under contract by USFS

CA Treasured Landscapes

Truckee River, Tahoe NF

Big Tujunga Canyon/San Gabriel
Mountains National Monument,
Angeles NF









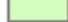




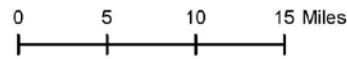
United States Department of Agriculture
Forest Service
Tahoe National Forest



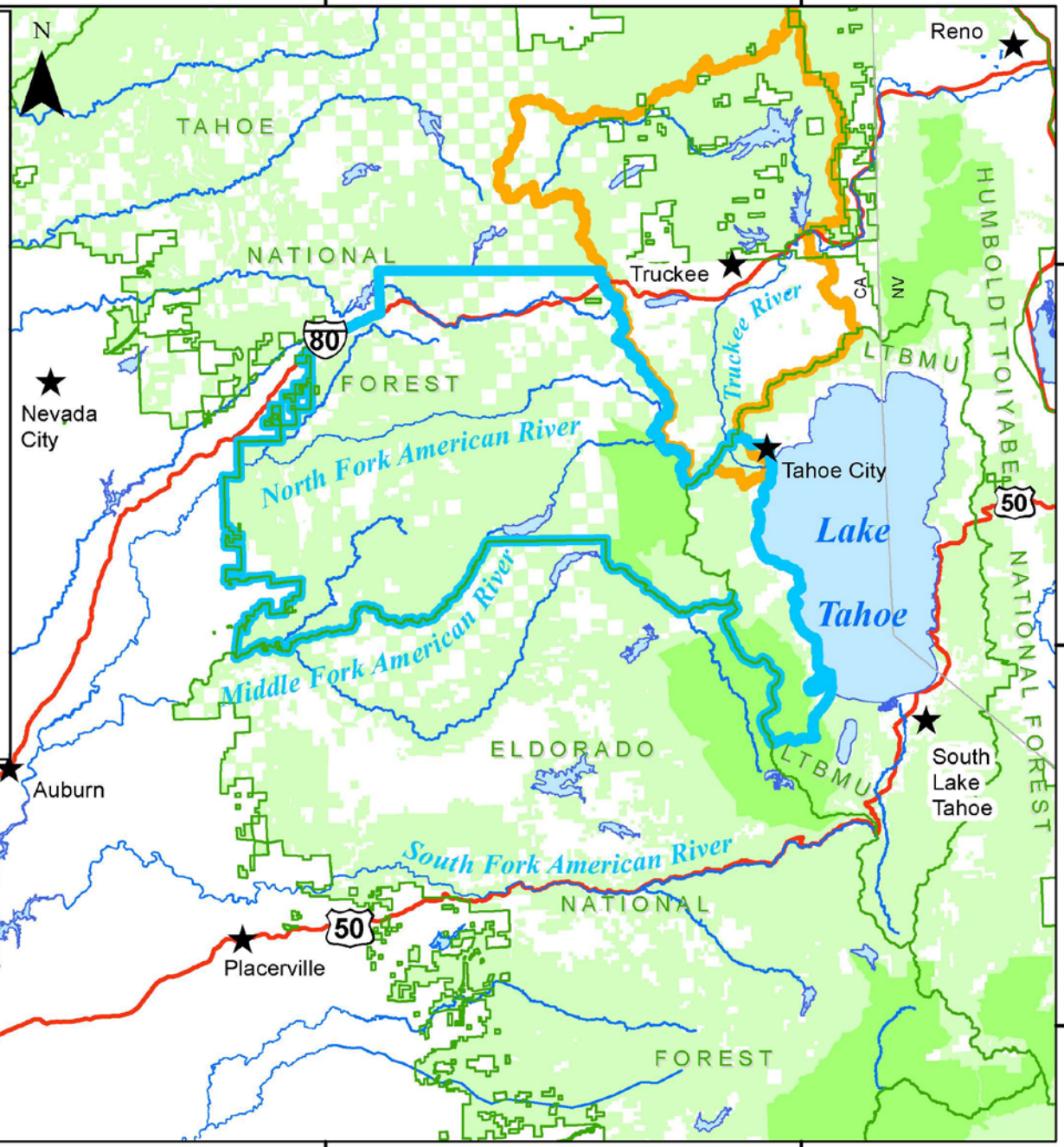
Proposed Treasured Landscapes Site

4/27/2016

-  Proposed Treasured Landscapes Site
-  Truckee Treasured Landscapes Site
-  Major River
-  Highway 50 and 80
-  Major Lake or Reservoir
-  National Forest Boundary
-  National Forest
-  Wilderness
-  Non-National Forest



Data Source: Tahoe National Forest and USFS SDE geospatial databases. Coordinate System: NAD 1983, UTM zone 10, GRS 1980. Map by Tahoe National Forest, Eastside GIS. All lines are approximate.



650000 700000 750000

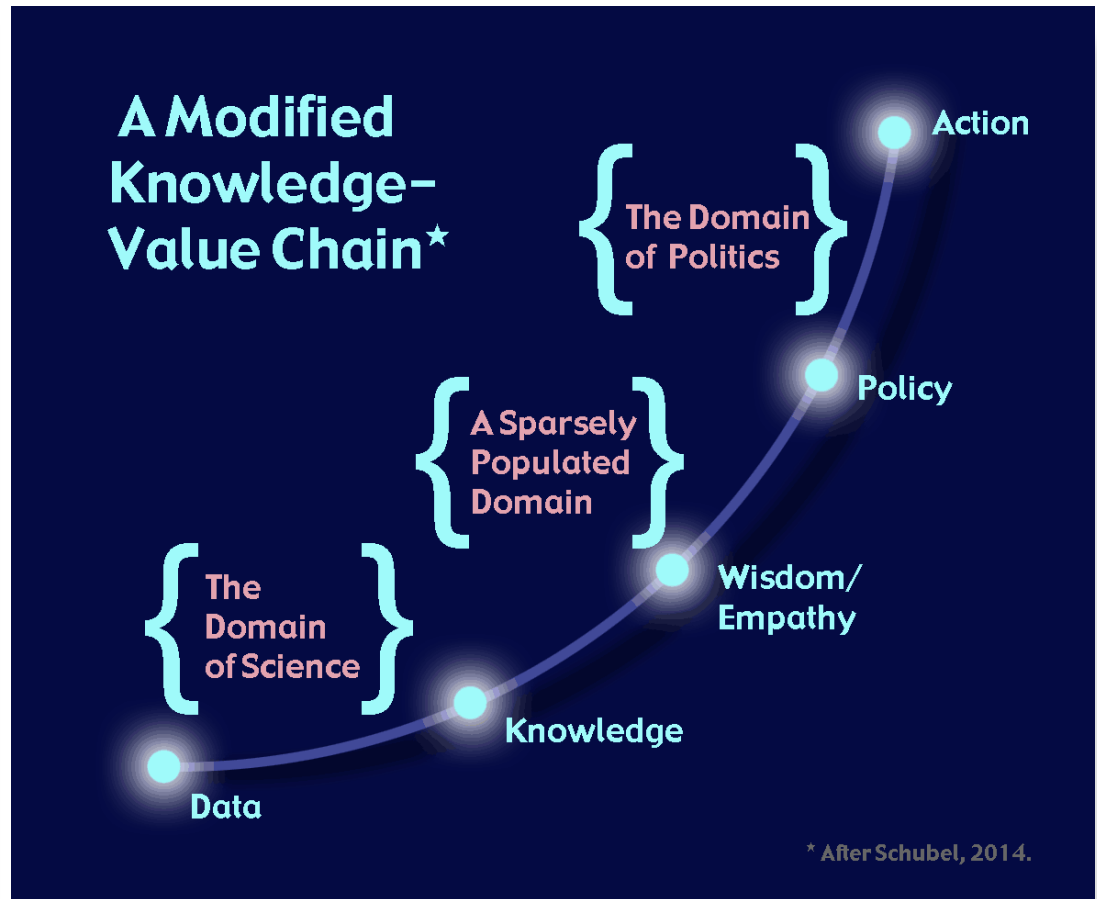
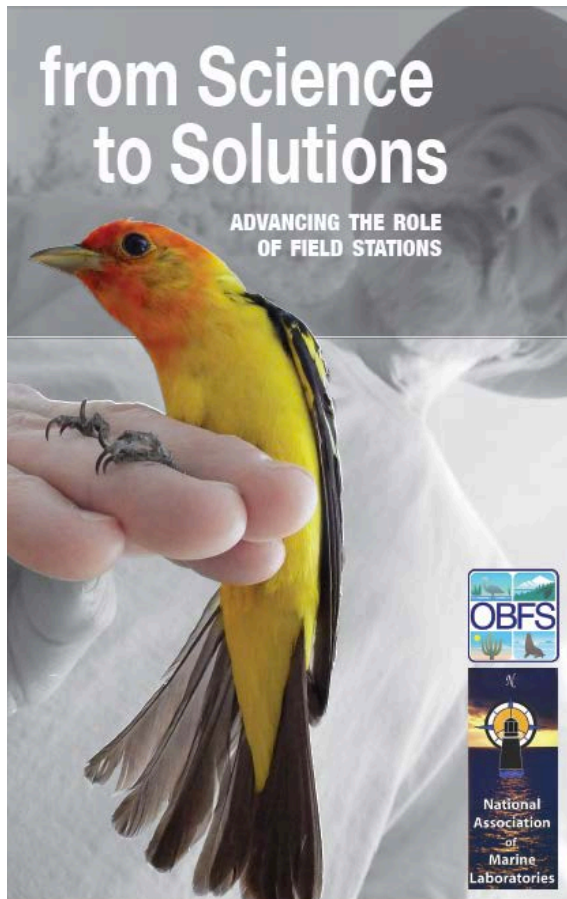
4360000
4320000
4280000

4360000
4320000
4280000

Sounds like a success story to me – or is it?

- Hand thin and mechanical thinned units completed summer 2016
- Unable to get saw log units implemented.
- Need to create a wood products industry in California.
- Collaboration at multiple levels needed to both increase the pace and scale of forest thinning as well as a way to deal with the volume of material that needs to come off of the landscape.

2014 the National Academy of Sciences



Phase II – Working to create a timber Industry. In order for us to increase the pace and scale of needed and responsible forest management we must have a way to deal with all of the woody material that will come off of the landscape.



Thoughts?